

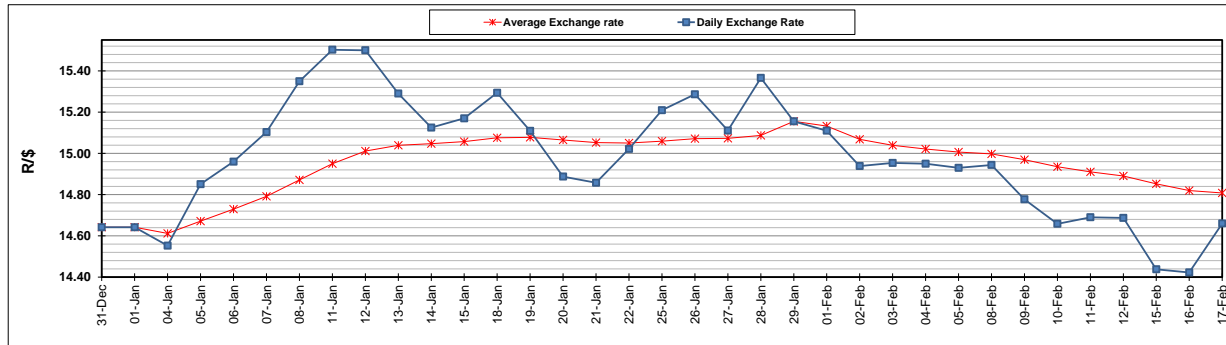
	PETROL 95 ULP	PETROL 93 ULP & LRP	DIESEL 0.05%	DIESEL 0.005%	ILL. PAR.
GAUTENG PUMP PRICE (SA c/l) AS FROM 03/02/2021	1,567.000	1,550.000	-	-	-
WHOLESALE PRICE (SA c/l) AS FROM 03/02/2021	-	-	1,358.420	1,360.820	798.688
SINGLE NATIONAL MAXIMUM RETAIL PRICE	-	-	-	-	1,008.000
BASIC FUEL PRICE - 17/02/2021 (SA c/l)	666.886	660.221	659.167	662.655	637.186
PRESS RELEASE CONTRIBUTION TO BFP 03/02/2021 - 17/02/2021 (SA c/l)	600.170	593.170	599.630	602.030	586.128
UNIT OVER/(UNDER) RECOVERY - 17/02/2021 (SA c/l)	(66.716)	(67.051)	(59.537)	(60.625)	(51.058)
AVERAGE BASIC FUEL PRICE 29/01/2021 - 17/02/2021	638.767	630.220	633.820	637.518	614.685
AVERAGE UNIT OVER/(UNDER) RECOVERY 29/01/2021 - 17/02/2021	(55.955)	(54.407)	(46.619)	(48.131)	(41.200)

### ANALYSIS MOVEMENT OF AVERAGE OVER/(UNDER) RECOVERY

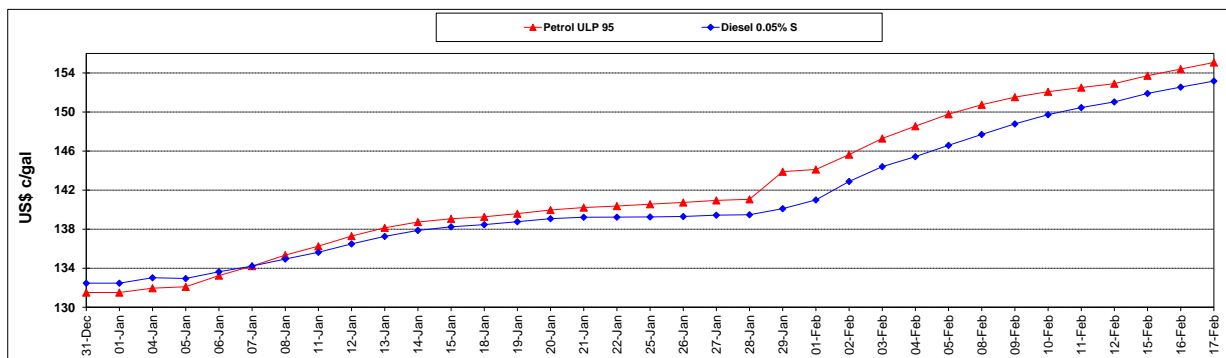
	PETROL 95	PETROL 93	DIESEL 0.05%	DIESEL 0.005%	ILL. PAR.
- MOVEMENT IN INTERNATIONAL PRODUCT PRICES	(67.989)	(66.281)	(58.561)	(60.142)	(52.781)
- MOVEMENT IN EXCHANGE RATE	12.035	11.874	11.942	12.011	11.581
AVERAGE UNIT OVER/(UNDER) RECOVERY 29/01/2021 - 17/02/2021	(55.955)	(54.407)	(46.619)	(48.131)	(41.200)

### R/\$ EXCHANGE RATE - (R/\$14.6600 - 17/02/2021)

#### EXCHANGE RATE USED IN BASIC FUEL PRICE



#### INTERNATIONAL PRODUCT PRICES OF BASKET USED IN BASIC FUEL PRICE



#### BASIC FUEL PRICE IN SA CENTS PER LITRE

